

MOD TW100



Light Efficiency:

22 Lumen/Watt

Light Quality:

CRI: 95.7

Color Temperature:

2689 K

Output: 1286 lm

Peak: 6658 cd

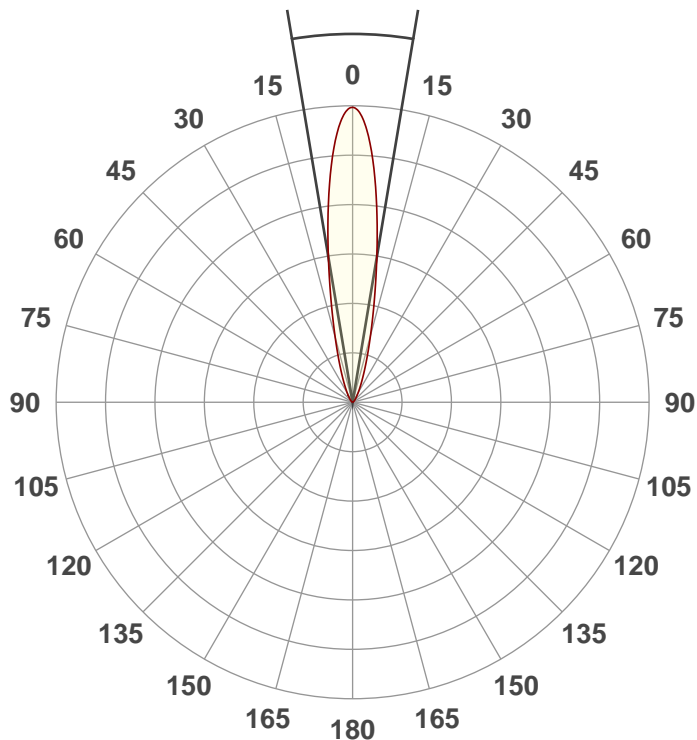
Power: 58.7 W

PF: 0.63



Beam Angle

18.9°



Test:

20Deg WW

Date:

11/26/2018

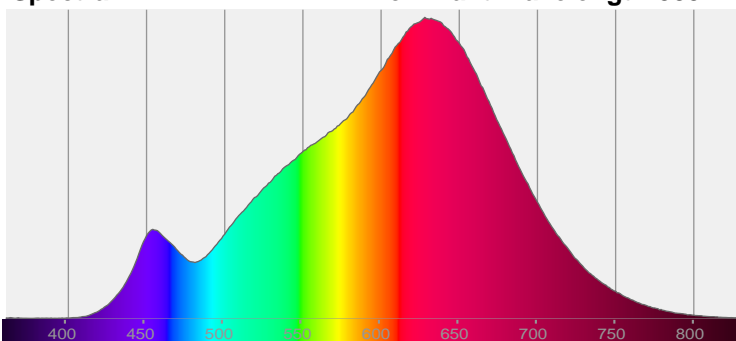
Note:



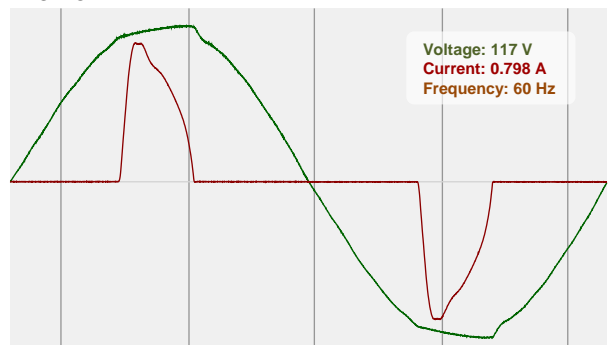
CIE 1931
x: 0.459
y: 0.408

Spectra

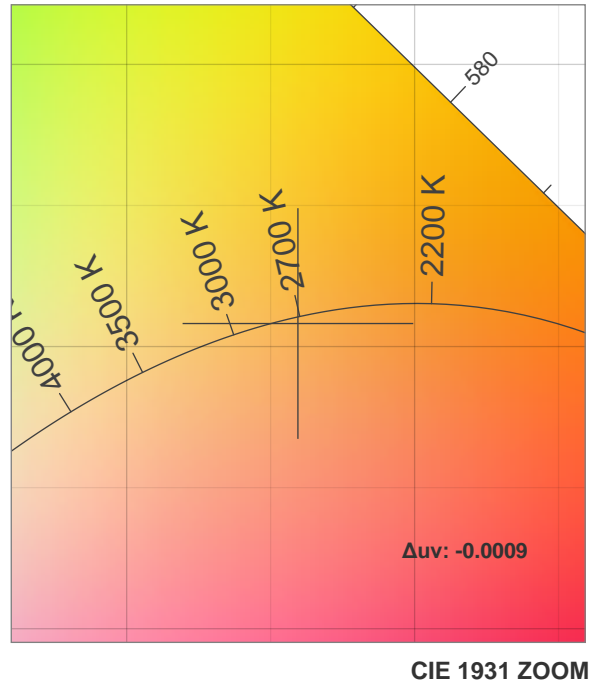
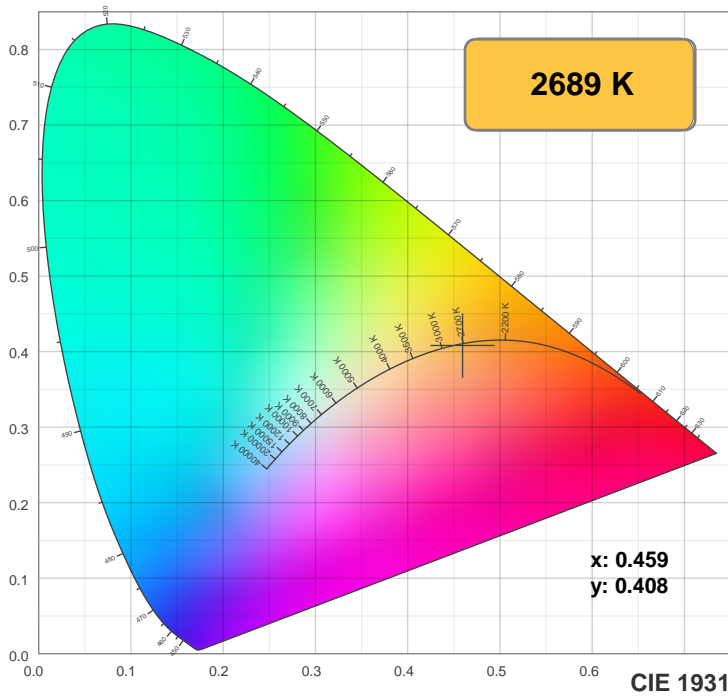
Dominant Wavelength: 585nm



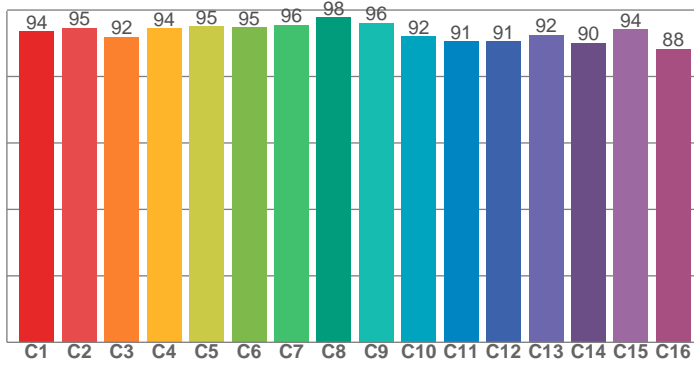
Power



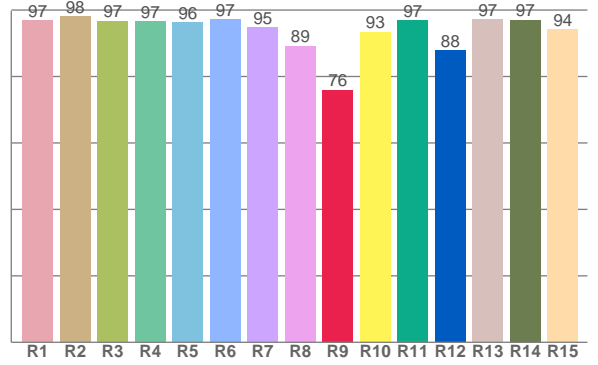
Color Details



TM30: 93.2



CRI: 95.7 (R1-R8)



CRI R values, only R1-R8 are used to calculate final CRI value

R1	R2	R3	R4	R5	R6	R7	R8	R9	R10	R11	R12	R13	R14	R15
96.8	98.0	96.8	96.5	96.2	97.3	94.9	89.2	76.0	93.4	97.0	87.9	97.3	97.1	94.1

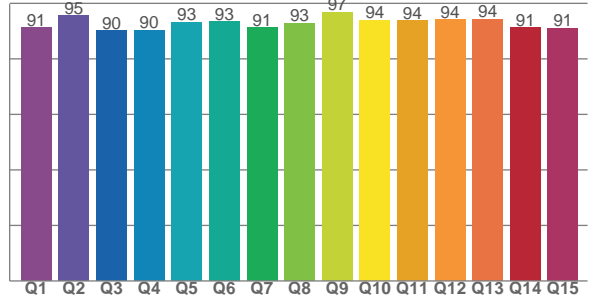
TM30 C values, 16 binned values out of total of 99 C values

C1	C2	C3	C4	C5	C6	C7	C8	C9	C10	C11	C12	C13	C14	C15	C16
93.5	94.7	91.9	94.4	95.1	94.8	95.5	97.8	96.2	92.1	90.5	90.6	92.4	90.1	94.2	88.3

CQS Q values

Q1	Q2	Q3	Q4	Q5	Q6	Q7	Q8	Q9	Q10	Q11	Q12	Q13	Q14	Q15
91.3	95.5	90.2	90.4	93.2	93.4	91.1	92.9	96.9	93.9	93.8	94.0	94.4	91.2	91.0

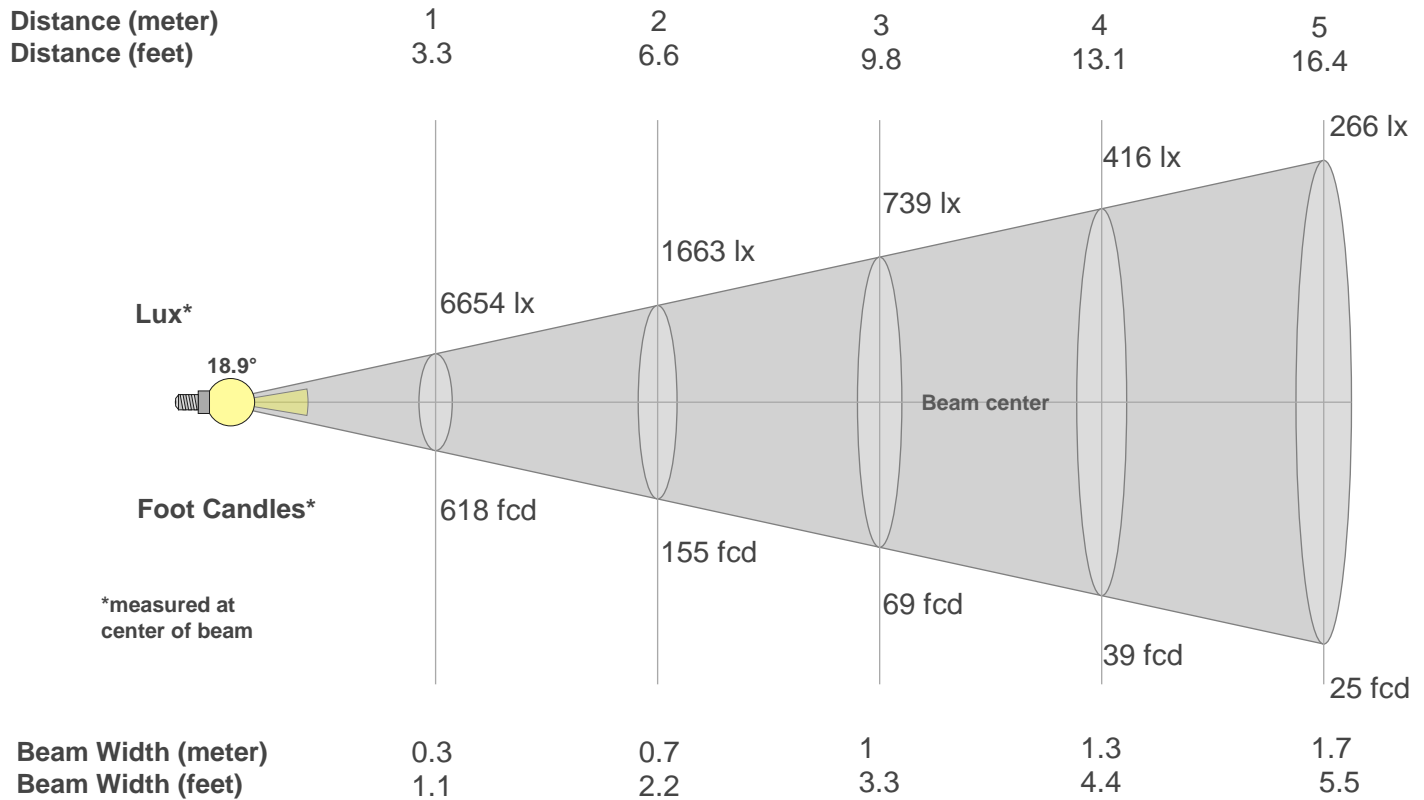
CQS: 92.5



Color Parameters

Color Temperature	Color Rendering Index	Red Component	Color Fidelity	Color Gamut	Color Quality Scale	Color Coordinate CIE 1931	Color Coordinate CIE 1931	Color Coordinate	Color Coordinate	Color Deviation from Black Body
CCT	CRI	CRI R9	TM30 Rf	TM30 Rg	CQS	x	y	u	v	Δuv
2689 K	95.7	76.0	93.2	100.7	92.5	0.459	0.408	0.263	0.351	-0.0009

Beam Details



Beam Intensities from 1-20m

m	1	2	3	4	5	6	7	8	9	10	11	12	13	14	15	16	17	18	19	20
ft	3.3	6.6	9.8	13.1	16.4	19.7	23	26.2	29.5	32.8	36.1	39.4	42.7	45.9	49.2	52.5	55.8	59.1	62.3	65.6
lx	6654	1663	739	416	266	185	136	104	82	67	55	46	39	34	30	26	23	21	18	17
fcd	618.2	154.5	68.7	38.6	24.7	17.2	12.6	9.7	7.6	6.2	5.1	4.3	3.7	3.2	2.7	2.4	2.1	1.9	1.7	1.5

Intensities in 0° C-plane

0°	2°	4°	6°	8°	10°	12°	14°	16°	18°	20°	22°	24°	26°	28°	30°	32°	34°	36°	38°
6654	6439	5836	4973	4013	3101	2338	1754	1325	1011	778	603	473	375	300	242	196	168	141	116
100%	97%	88%	75%	60%	47%	35%	26%	20%	15%	12%	9%	7%	6%	5%	4%	3%	3%	2%	2%

Intensities in 90° C-plane

0°	2°	4°	6°	8°	10°	12°	14°	16°	18°	20°	22°	24°	26°	28°	30°	32°	34°	36°	38°
6654	6439	5836	4973	4013	3101	2338	1754	1325	1011	778	603	473	375	300	242	196	168	141	116
100%	97%	88%	75%	60%	47%	35%	26%	20%	15%	12%	9%	7%	6%	5%	4%	3%	3%	2%	2%

Intensities in 180° C-plane

0°	2°	4°	6°	8°	10°	12°	14°	16°	18°	20°	22°	24°	26°	28°	30°	32°	34°	36°	38°
6654	6426	5801	4935	3990	3107	2368	1797	1368	1048	807	630	494	392	313	253	205	172	143	122
100%	97%	87%	74%	60%	47%	36%	27%	21%	16%	12%	9%	7%	6%	5%	4%	3%	3%	2%	2%

Intensities in 270° C-plane

0°	2°	4°	6°	8°	10°	12°	14°	16°	18°	20°	22°	24°	26°	28°	30°	32°	34°	36°	38°
6654	6426	5801	4935	3990	3107	2368	1797	1368	1048	807	630	494	392	313	253	205	172	143	122
100%	97%	87%	74%	60%	47%	36%	27%	21%	16%	12%	9%	7%	6%	5%	4%	3%	3%	2%	2%

Beam Angle 50%	Field Angle 10%	Cutoff Angle 2,5%	Intensity Ratio in 120° Cone	Intensity Ratio in 90° Cone
18.9°	42.8°	68.5°	98.7%	94.5%